



# Iowa Ag News – Cattle on Feed

Iowa Field Office · 210 Walnut Street Ste 833 · Des Moines IA 50309 · (515) 284-4340 · (800) 772-0825  
fax (855) 271-9802 · [www.nass.usda.gov/ia](http://www.nass.usda.gov/ia)

Cooperating with the Iowa Department of Agriculture and Land Stewardship

August 23, 2013

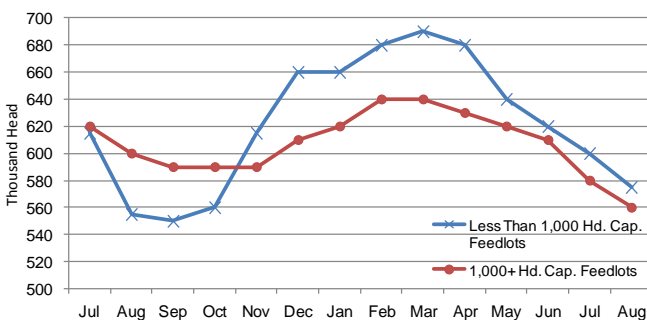
Media Contact: Greg Thessen

Cattle and calves on feed for slaughter market in Iowa for all feedlots totaled 1,135,000 on August 1, 2013 according to the USDA, National Agricultural Statistics Service, Iowa Field Office. The inventory is down 4 percent from July 1, 2013 and down 2 percent from August 1, 2012. Feedlots with a capacity greater than 1,000 head had 560,000 head on feed, down 3 percent from last month and down 7 percent from last year. Feedlots with a capacity less than 1,000 head had 575,000 head on feed, down 4 percent from last month but up 4 percent from last year.

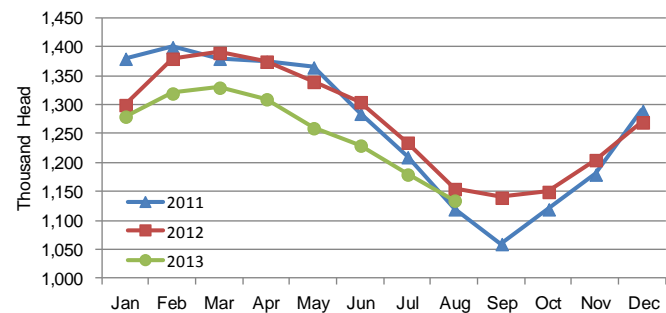
Placements during July totaled 106,000 head, a decrease of 13 percent from last month but an increase of 12 percent from a year ago. Feedlots with a capacity greater than 1,000 head placed 48,000 head, up 2 percent from last month but down 8 percent from last year. Feedlots with a capacity less than 1,000 head placed 58,000 head. This is down 23 percent from last month but up 35 percent from last year.

Marketings for July were 144,000 head, down 13 percent from last month and down 15 percent from last year. Feedlots with a capacity greater than 1,000 head marketed 64,000 head, down 15 percent from last month and down 9 percent from last year. Feedlots with a capacity less than 1,000 head marketed 80,000 head, down 12 percent from last month and down 20 percent from last year. Other disappearance totaled 7,000 head.

**Cattle on Feed, Inventory by Feedlot Capacity, Iowa: Current Month & Past 12 Months**



**Cattle on Feed, Inventory on all Feedlots, Iowa: 2011-2013**



## All Cattle on Feed, Iowa

Item	Lots 1,000+ Head	Lots Less than 1,000 Head	All Lots
	(1,000 Head)	(1,000 Head)	(1,000 Head)
Cattle on Feed, July 1, 2013 .....	580	600	1,180
July Placements .....	48	58	106
July Marketings .....	64	80	144
July Other Disappearance .....	4	3	7
Cattle on Feed, August 1, 2013 .....	560	575	1,135

## Cattle on Feed: Number on Feed, Placements, Marketings, and Other Disappearance by Month, 1,000+ Capacity Feedlots

[Cattle and calves on feed are animals for slaughter market being fed a ration of grain or other concentrates and are expected to produce a carcass that will grade select or better.]

State	Cattle on Feed August 1			Placements during July			Marketings during July			July Disappearance other than Slaughter <sup>1</sup>		
	2012	2013	'13 as % of '12	2012	2013	'13 as % of '12	2012	2013	'13 as % of '12	2012	2013	'13 as % of '12
	(1,000 Head)	(1,000 Head)	(Percent)	(1,000 Head)	(1,000 Head)	(Percent)	(1,000 Head)	(1,000 Head)	(Percent)	(1,000 Head)	(1,000 Head)	(Percent)
Arizona .....	274	262	96	22	23	105	26	27	104	1	1	100
California .....	475	515	108	52	57	110	54	55	102	3	2	67
Colorado .....	940	870	93	155	125	81	180	170	94	5	5	100
Idaho .....	190	185	97	35	39	111	44	48	109	1	1	100
<b>Iowa .....</b>	<b>600</b>	<b>560</b>	<b>93</b>	<b>52</b>	<b>48</b>	<b>92</b>	<b>70</b>	<b>64</b>	<b>91</b>	<b>2</b>	<b>4</b>	<b>200</b>
Kansas .....	2,160	2,000	93	540	440	81	415	435	105	15	15	100
Nebraska .....	2,230	2,080	93	410	380	93	440	460	105	10	20	200
Oklahoma .....	320	285	89	68	45	66	66	64	97	2	1	50
South Dakota ..	190	180	95	20	19	95	39	37	95	1	2	200
Texas .....	2,650	2,490	94	475	460	97	475	520	109	20	10	50
Washington .....	210	189	90	40	41	103	39	54	138	1	1	100
Other States ....	417	410	98	53	45	85	65	66	102	2	2	100
United States ..	10,656	10,026	94	1,922	1,722	90	1,913	2,000	105	63	64	102

(D) Withheld to avoid disclosing data for individual operations.

<sup>1</sup> Includes death loss, movement from feedlots to pasture, and shipments to other feedlots for further feeding.

## United States Cattle on Feed

Cattle and calves on feed for slaughter market in the United States for feedlots with capacity of 1,000 or more head totaled 10.0 million head on August 1, 2013. The inventory was 6 percent below August 1, 2012.

Placements in feedlots during July totaled 1.72 million, 10 percent below 2012. Net placements were 1.66 million head. During July, placements of cattle and calves weighing less than 600 pounds were 390,000, 600-699 pounds were 275,000, 700-799 pounds were 455,000, and 800 pounds and greater were 602,000.

Marketings of fed cattle during July totaled 2.00 million, 5 percent above 2012.

Other disappearance totaled 64,000 during July, 2 percent above 2012.